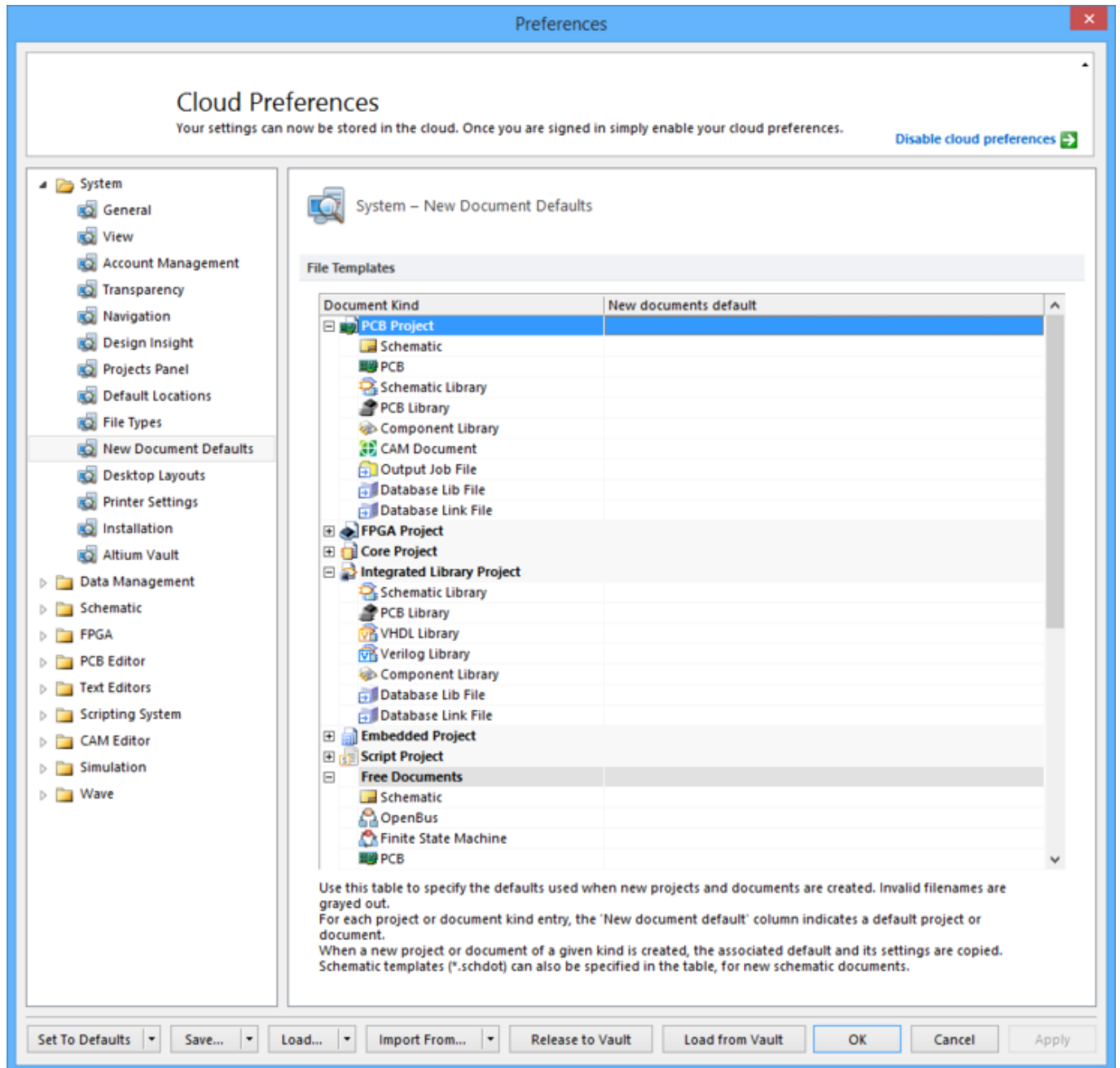


## A New Era for Documentation

Modified by Susan Riege on Apr 11, 2017

Parent page: [System Preferences](#)



The **System - New Document Defaults** page of the *Preferences* dialog

# Summary

The **System - New Document Defaults** page of the *Preferences* dialog allows the user to specify the defaults used when new projects and documents are created.


## Access

This page is accessed by clicking **New Document Defaults** under the **System** folder in the main [Preferences dialog](#) (**DXP » Preferences**).

## Options/Controls

- **Document Kind** - lists all the document/file types.

When a new project or document of a given kind is created, the associated default and its settings are copied.

- **New documents default** - click the right hand side of the column then  to open a window in which you can define the default document.



If you have a company template, you can specify the directory for the template in the **New documents default** area.

Language English

---

### Source URL:

[http://www.altium.com/documentation/display/ADES/WorkspaceManager\\_Dlg-SysPrefsForm\\_DefaultProjects\(\(System+-+New+Document+Defaults\)\)\\_AD](http://www.altium.com/documentation/display/ADES/WorkspaceManager_Dlg-SysPrefsForm_DefaultProjects((System+-+New+Document+Defaults))_AD)