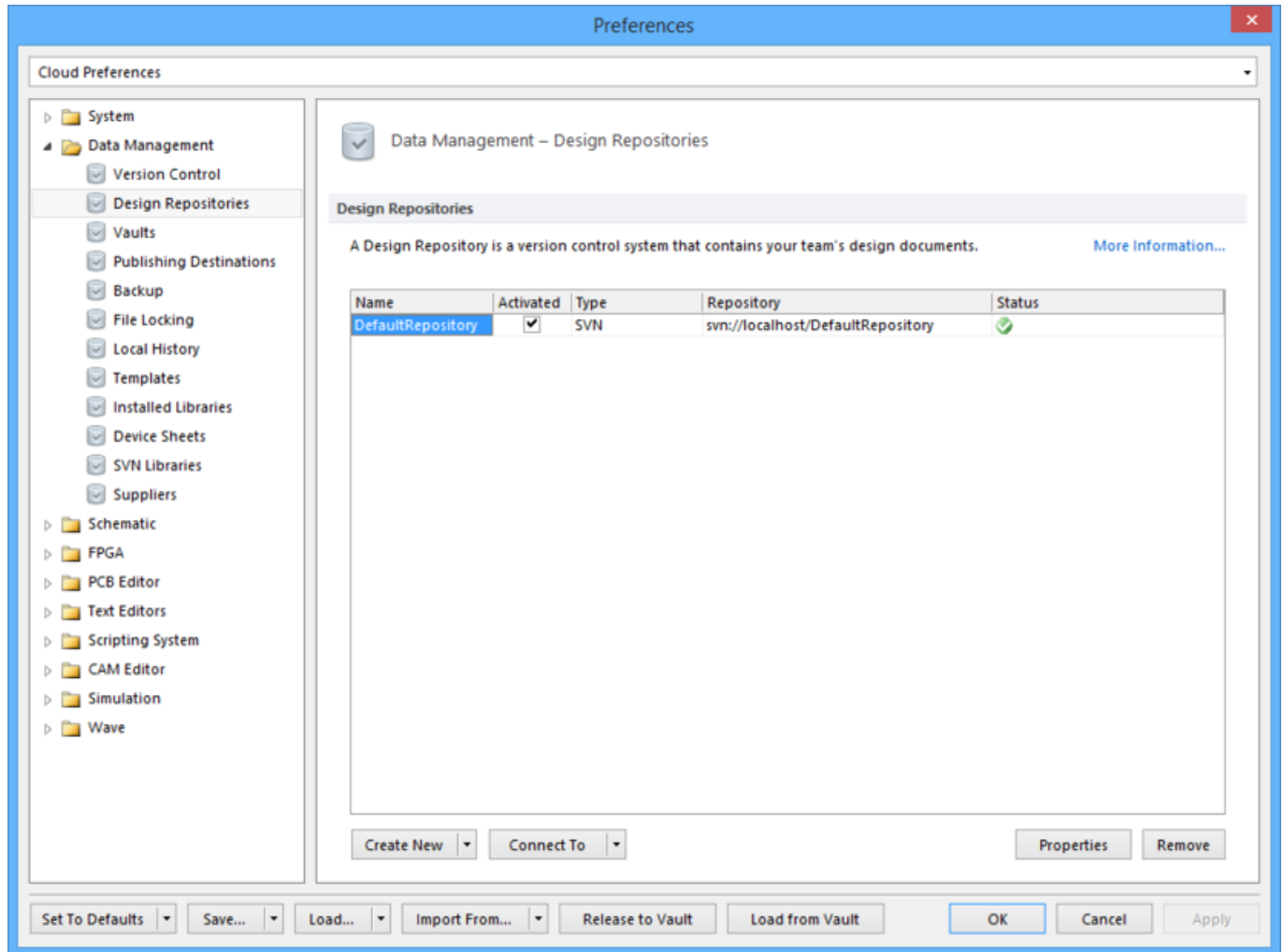


Altium技术文档新纪元

Modified by Susan Riege on Apr 11, 2017

Parent page: [Data Management Preferences](#)



The **Data Management - Design Repositories** page of the *Preferences* dialog.

## Summary

As its name suggests, the **Data Management - Design Repositories** page of the *Preferences* dialog allows you to create or connect to a design repository.

## Access

The **Data Management - Design Repositories** page is part of the main *Preferences* dialog (DXP » Preferences) and is accessed by clicking the **Design Repositories** entry under the **Data Management** folder, in the left hand pane of the dialog.

## Options/Controls

## Design Repositories

A Design Repository is a version control system that contains your team's design document.

- **Design Repository List** - Display all the current available design repositories.
- **Create New** - Create a new design repository
- **Connect to** - Connect to an existing design repository.
- **Properties** - Select a design repository then click this button to edit its properties.
- **Remove** - Select a design repository and click this button to remove it from the list.

---

### Source URL:

[https://www.altium.com/documentation/cn/display/ADES/VersionControl\\_Dlg-RegisteredDesignVaultsForm\(\(Data+Management+-+Design+Repositories\)\)\\_AD](https://www.altium.com/documentation/cn/display/ADES/VersionControl_Dlg-RegisteredDesignVaultsForm((Data+Management+-+Design+Repositories))_AD)