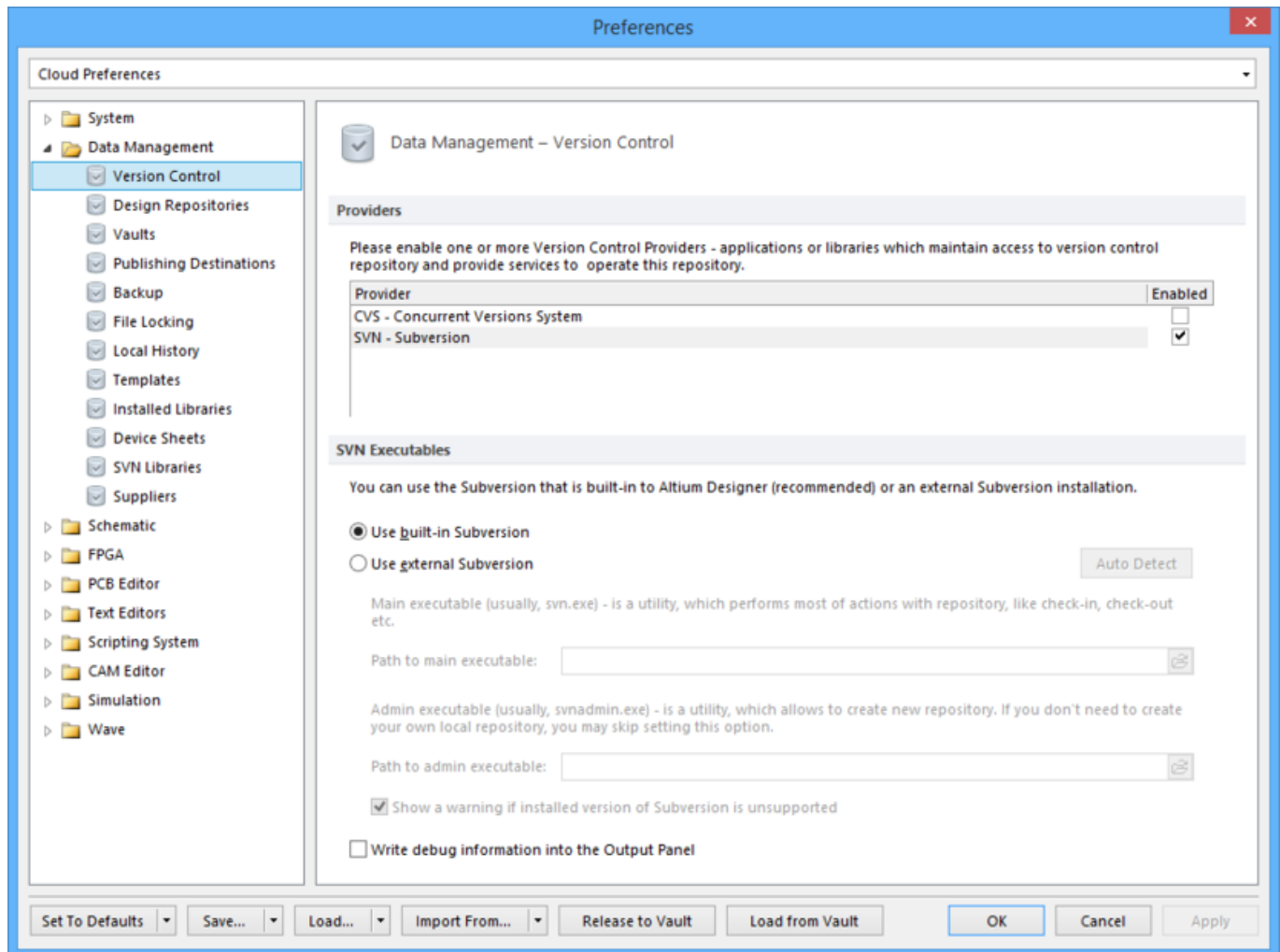


Using Altium Documentation

Modified by Susan Riege on Apr 11, 2017

Parent page: [Data Management Preferences](#)



The **Data Management - Version Control** page of the *Preferences* dialog.

Summary

As its name suggests, the **Data Management - Version Control** page of the *Preferences* dialog allows you to set up version control options such as Providers and SVN Executables.

Access

The **Data Management - Version Control** page is part of the main *Preferences* dialog (**DXP » Preferences**) and is accessed by clicking the **Version Control** entry under the **Data Management** folder, in the left hand pane of the dialog.

Options/Controls

Providers

Enable one or more Version Control Providers - applications or libraries which maintain access to version control repository and provider services to operate this repository.

- **Provider**
 - CVS - Concurrent Versions System option if you are using the Concurrent Versions System version control system.
 - SVN - Subversion option if you are using the Subversion version control system.
- **Enable** - Check to enable selected version control applications.

SVN Executables

You can use the Subversion that is built-in(recommended) or an external Subversion installation.

- **Use built-in Subversion** - Check this option to use built-in Subversion.
- **Use external Subversion**- Check this option to use external Subversion.
 - **Path to main executable** - Specify the path to the main executable, usually svn.exe. This will then allow software to perform most of Subversions repository actions, such as commit and update.
 - **Path to admin executable** - Specify the path to the admin executable, usually svnadmin.exe. This will then allow software to create a repository. If you already have a repository you may skip this option. Restart Altium Designer to confirm your choice of version control system.
 - **Show a warning if installed version of Subversion is unsupported** - Check this option to show a warning if installed Subversion is not supported.

Note that it is necessary to have Subversion 1.5.0 or later installed in order for the SVN commands to work correctly from Altium Designer.

- **Write debug information into Output Panel** - Check this option to allow writing debug info to the *Output* panel.

Source URL:

[https://www.altium.com/documentation/display/ADES/VersionControl_Dlg-ProviderSetupForm\(\(Data+Management++Version+Control\)\)_AD](https://www.altium.com/documentation/display/ADES/VersionControl_Dlg-ProviderSetupForm((Data+Management++Version+Control))_AD)