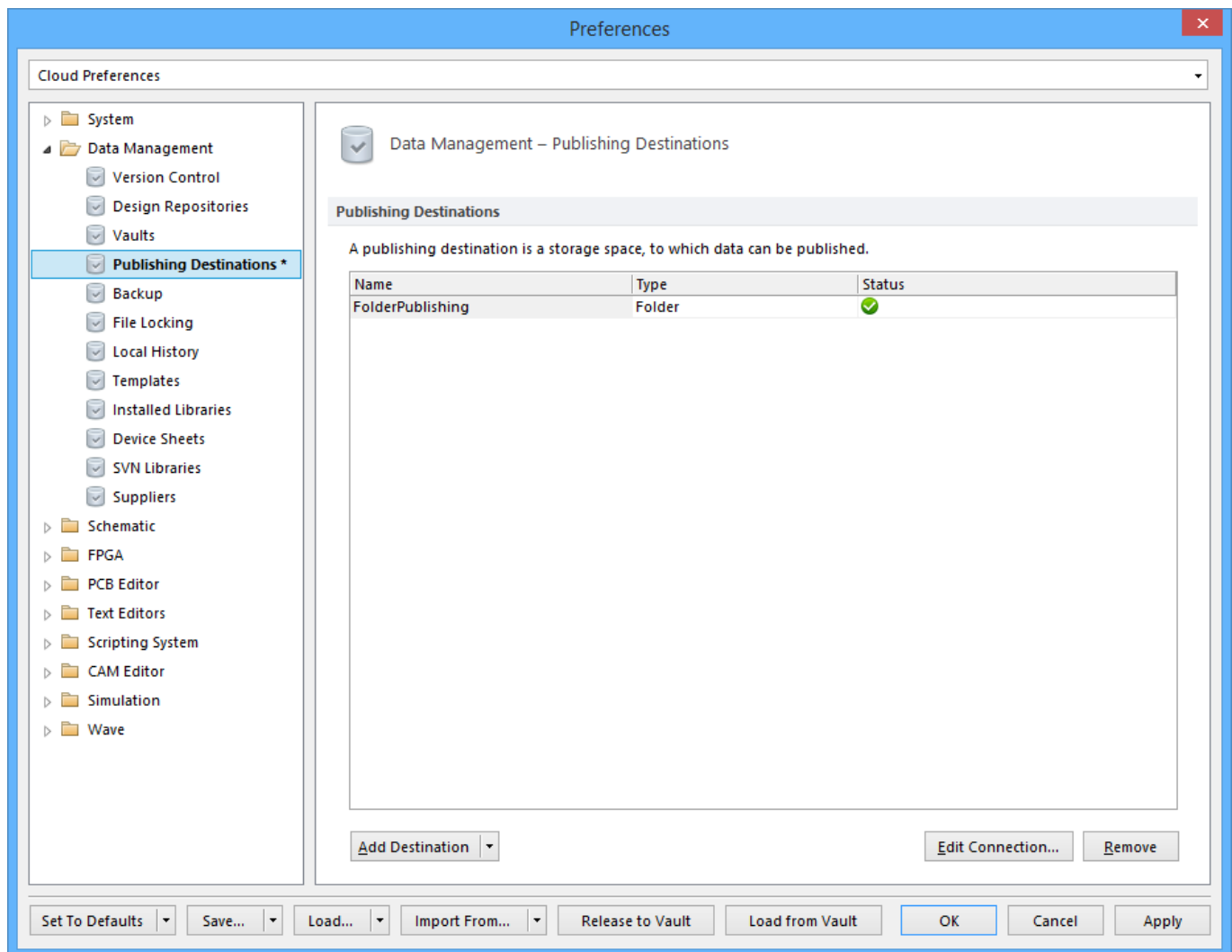


Using Altium Documentation

Modified by Annika Krilov on Apr 11, 2017

Parent Page: [Data Management Preferences](#)



The **Data Management - Publishing Destinations** page of the *Preferences* dialog.

Summary

As its name suggests, the **Data Management - Publishing Destinations** page of the *Preferences* dialog allow designers to set up publishing destinations, or storage spaces where data can be published.

Access

The **Data Management - Publishing Destinations** page is part of the main *Preferences* dialog (**DXP » Preferences**) and is accessed by clicking the **Publishing Destinations** entry under the **Data Management** folder, in the left hand pane of the dialog.

Options/Controls

- **Publishing Destinations table** - This table lists the name, type, and status of any existing Publishing Destinations. Double clicking on an entry will bring up the *Edit Connections* dialog for that publishing destination.
- **Add Destination** - Click to select one of the below options:
 - Amazon S3 - Select to open the *Add Amazon S3 Publishing Destination* dialog, which allows designers to enter information for their Amazon Web Services Account in order to set the account as a publishing destination.
 - Box.com - Select to open the *Add Box.com Publishing Destination* dialog, which allows designers to enter information for an existing Box.com account for use with Altium Designer as a publishing destination.
 - Folder - Select to open the *Add Folder Publishing Destination* dialog, which allow designers to enter information for a new or existing root folder location to be used as a publishing destination.
 - FTP - Select to open the *Add FTP Publishing Destination* dialog, which allows designers to enter information for an FTP server to be used as a publishing destination.
- **Edit Connection** - Select a publishing destination from the table and click this button to edit information for that entry.
- **Remove** - Select an entry from the publishing destination table and click this button to remove that entry. Only one entry can be removed at a time.

Source URL:

[https://www.altium.com/documentation/display/ADES/EDesignData_Dlg-SysPrefForm_Publishing\(\(Data+Management+-+Publishing+Destinations\)\)_AD](https://www.altium.com/documentation/display/ADES/EDesignData_Dlg-SysPrefForm_Publishing((Data+Management+-+Publishing+Destinations))_AD)