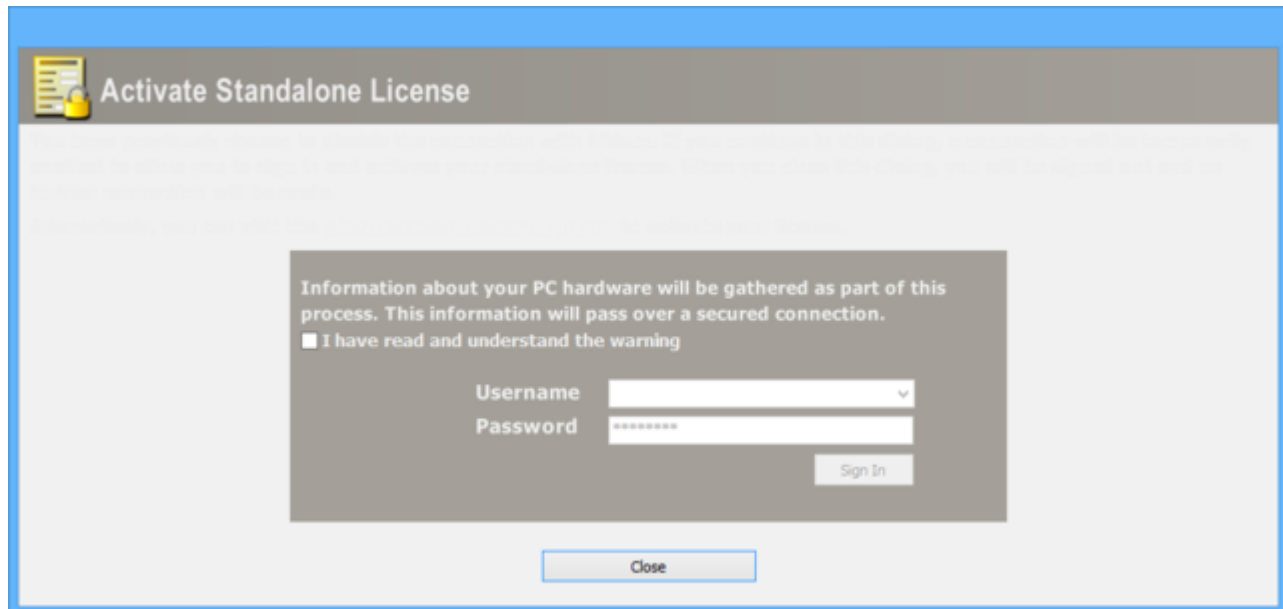


## Using Altium Documentation

Modified by Annika Krilov on Jul 14, 2017



The *Activate Standalone License* dialog

## Summary

If you are accessing your Standalone license for the very first time, or you have inadvertently deleted the license from your computer (and have no backup of the associated license file), you will need to activate (reactivate) the license. The *Activate Standalone License* dialog will enable a temporary connection with Altium, allowing you to sign in to your Altium account and activate/reactivate your Standalone License. Once successfully activated/reactivated, closing the dialog will place you back in a disconnected state.

## Access

The dialog is accessed by performing the following steps:

1. Click **DXP » My Account** then select the **License Management** tab.
2. Click the **Add standalone license file** link.
3. Click the **Activate license** link.

Users must be disconnected from Altium to access this dialog. To disconnect, click **Account Preferences** on the **License Management** page. Under the **Altium Connection** region of the *Preferences* dialog, select **No, I wish to remain disconnected from Altium**. Click **OK** to save these settings and return to the **License Management** page.

## Options/Controls

- **I have read and understand the warning** - enable the checkbox to confirm that you have read and understood the warning regarding a connection to Altium and the gathering of information about your PC hardware over the secure Altium portal.
- **Username** - enter your username.
- **Password** - enter your password.
- **Sign In** - click to sign in once all the above information has been entered. The connection to Altium will be made and the Standalone License(s) that are available to you will be presented within the dialog. Select your license and click the **Activate License** link. Once activated, a confirmation dialog will appear to reflect successful activation. Click **OK** in the confirmation dialog, then click the **Close & Sign Out** button at the bottom of the *Activate Standalone License* dialog.

After closing and signing out of the *Activate Standalone License* dialog, click the **Refresh** link in the **Available Licenses** region of the **License Management** page to reflect your use of the Standalone License.

See [Standalone Licensing](#) for more information.

---

### Source URL:

[https://www.altium.com/documentation/display/ADES/Client\\_Dlg-ActivateStandaloneLicenseOnlyForm\(\(Activate+Standalone+License\)\)\\_AD](https://www.altium.com/documentation/display/ADES/Client_Dlg-ActivateStandaloneLicenseOnlyForm((Activate+Standalone+License))_AD)