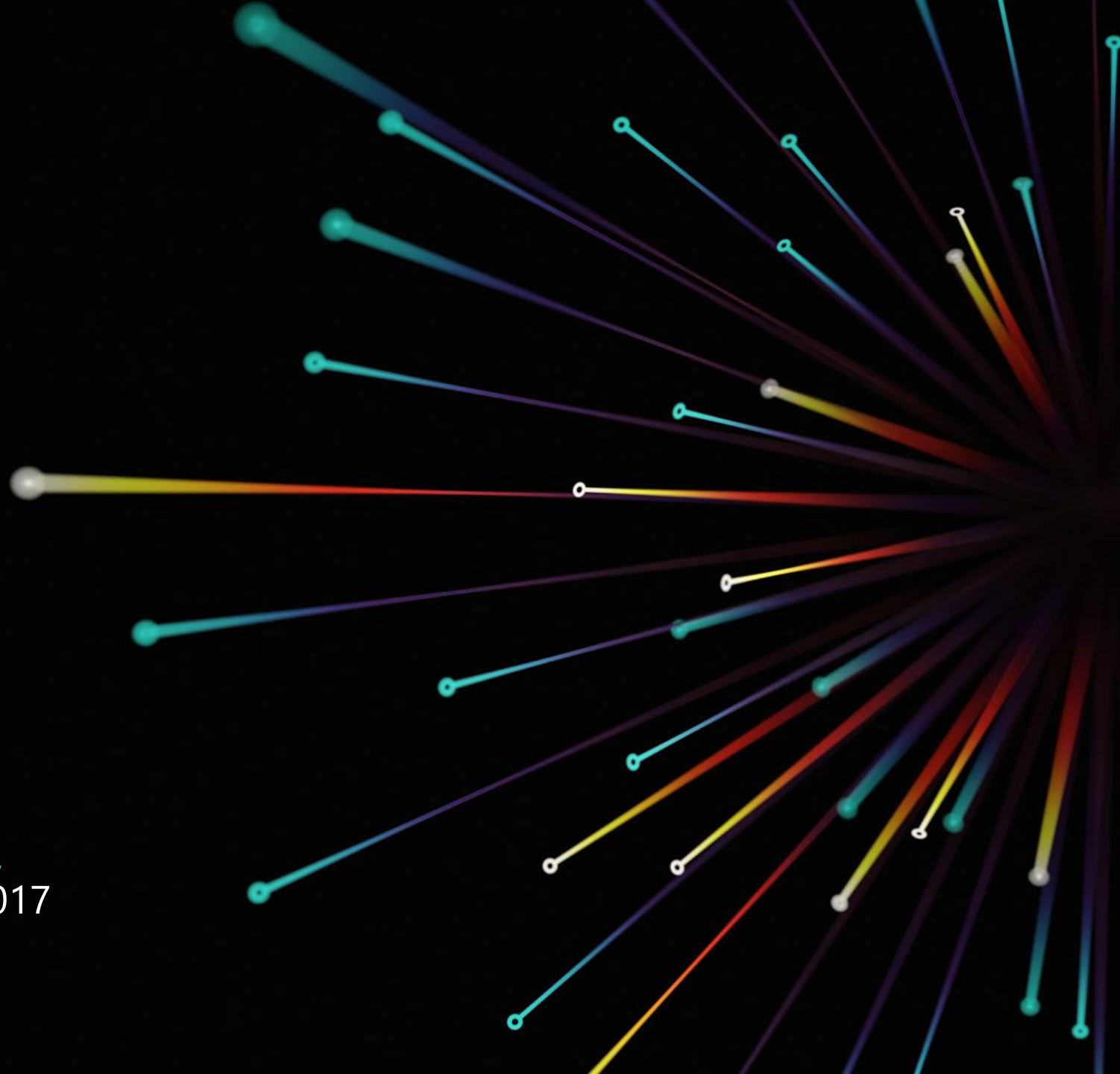


Altium®

**AltiumLive 2017:
ANNUAL PCB
DESIGN SUMMIT**

David Carmody, CID+ | **San Diego,**
Design Manager | Oct. 3-4, 2017



Agenda

- 1 San Diego Altium User Group**
- 2 Why use Project Parameters?
- 3 A type of Special String
- 4 Project Parameter usage
- 5 A couple extra tricks

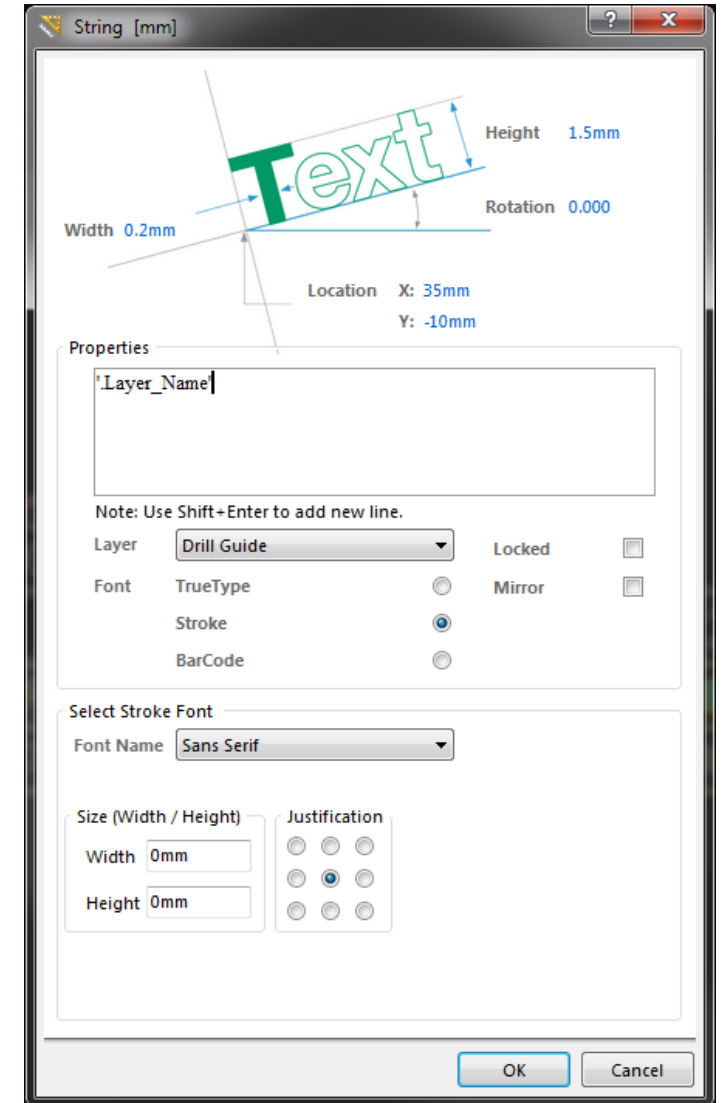
Simply put, not many of my customers use them!

- Handy for notes.
- Save time.
- Multiple uses.
- And in multiple locations.
- **Make your documentation bullet proof!**

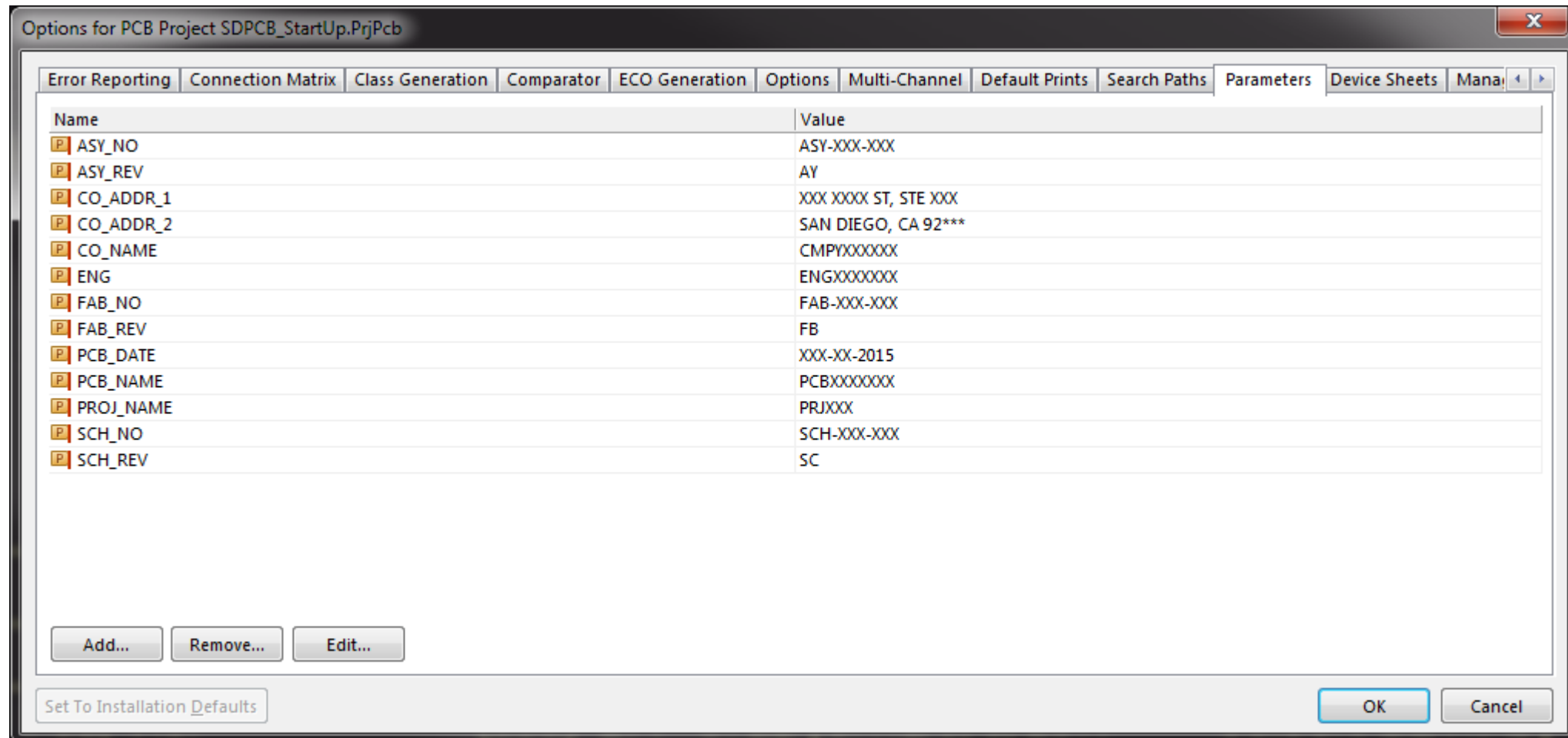
Special Stings to consider...

- .Designator
- .Layer_Name
- .Print_Date/.Print_Time
- .Print_Scale
- .xxx_count
- .Net_Names_On_Layer
- .Pcb_File_Name_No_Path

A Project Parameter then is like a custom Special String



Entered through Project Options, Parameters tab



Project Parameters at work in the PCB

Board Layers And Colors | Show / Hide | View Options | Transp

Display Options

Convert Special Strings

TOP SIDE SHOWN
EXCEPT ASSEMBLY BOTTOM
MOTTOB YJBM22A TPEOXE
TEMP ITERATION: SCH=_S1 PCB=_P1

.CO_NAME	PCB, .PCB_NAME	GERBER 274X
PN: .FAB_NO	REV: .FAB_REV	GERBER: SEE *.EXTREP
PCB LAYOUT BY: SAN DIEGO PCB	(858) 271-5722	DATE: .Print_Date CO.CONFIDENTIAL

.CO_NAME
 .PCB_NAME
 ASY: ASY_NO
 ON FAB_NO
 P/N: FAB_NO
 ©2017 MADE IN USA
 S/N
 REV

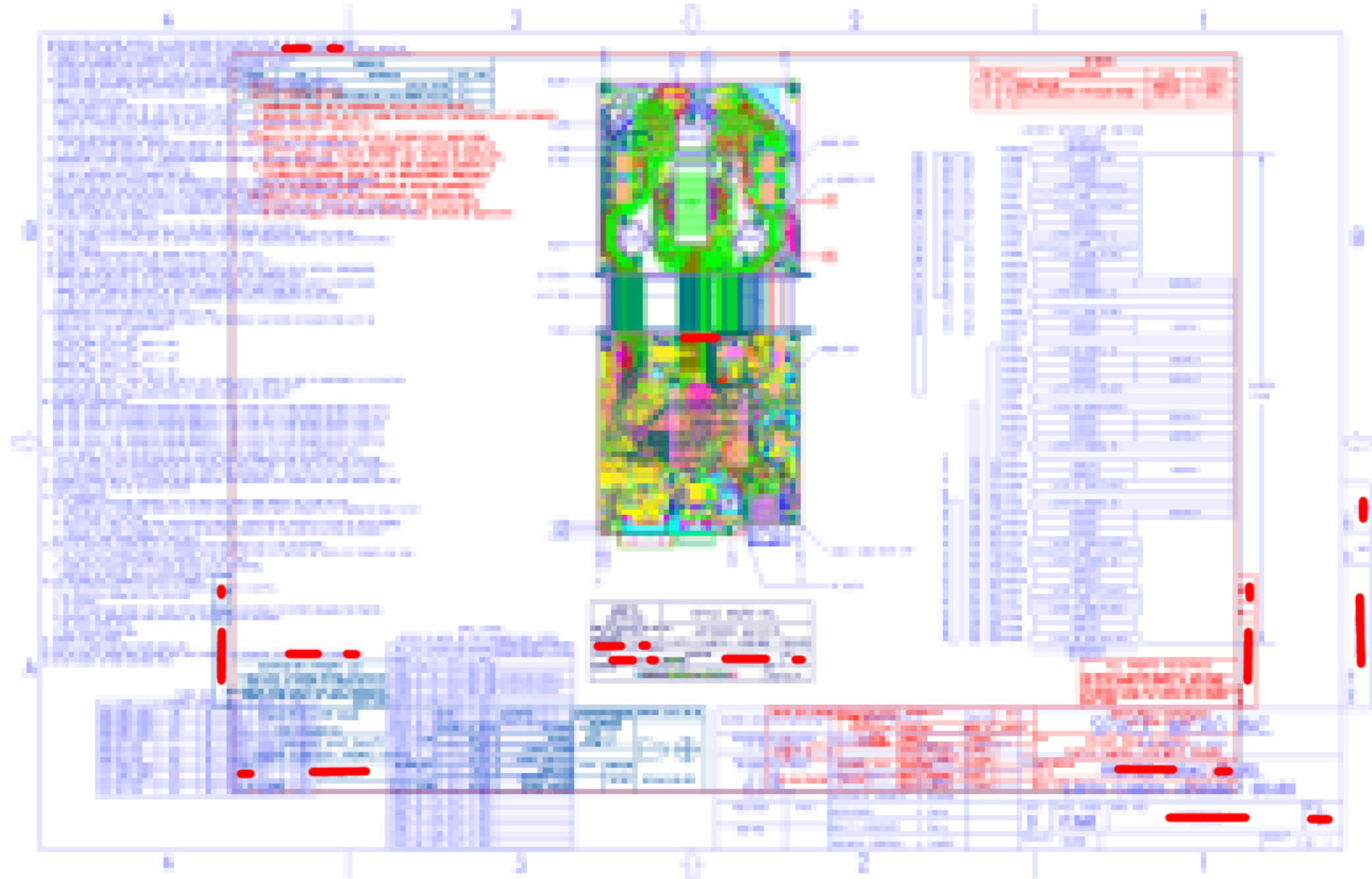
TOP SIDE SHOWN
EXCEPT ASSEMBLY BOTTOM
MOTTOB YJBM22A TPEOXE
TEMP ITERATION: SCH=_S1 PCB=_P1

CMPYXXXXXX	PCB, PCBXXXXXX	GERBER 274X
PN: FAB-XXX-XXX	REV: FB	GERBER: SEE *.EXTREP
PCB LAYOUT BY: SAN DIEGO PCB	(858) 271-5722	DATE: 9/8/2017 CO.CONFIDENTIAL

CMPYXXXXXX
 PCBXXXXXX
 ASY: ASY-XXX-XXX
 ON FAB-XXX-XXX
 P/N: FAB-XXX-XXX
 ©2017 MADE IN USA
 S/N
 REV

Real life example that
is not in Altium.

This is ONLY PN
and Rev!

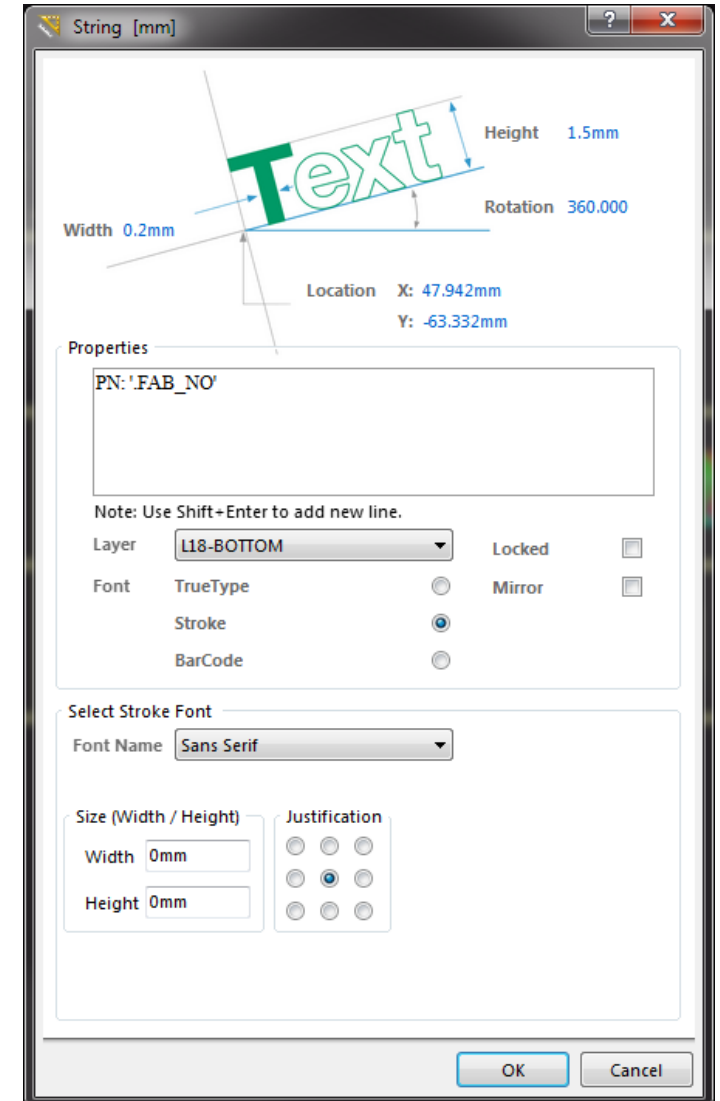


Interweaving Project Parameters and regular text

- Note the single quotes that can now be put in.
- Don't use unions anymore.
- Aligns like one long string.
- **Multiple locations all match exactly!**

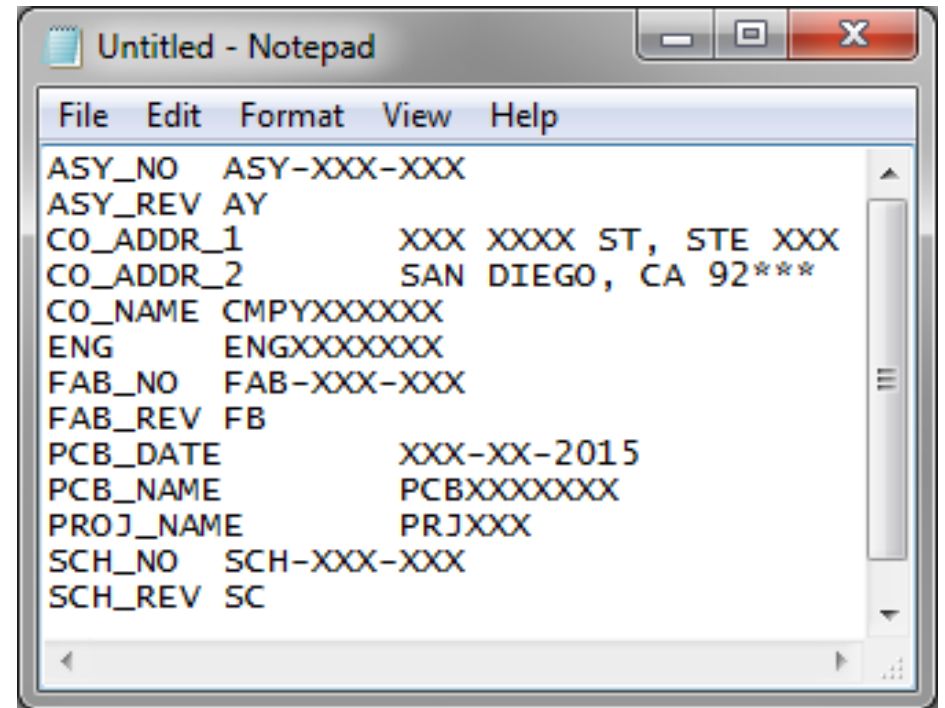
PN: '.FAB_NO'

PN: FAB-XXX-XXX



Copy/Paste your common parameters

- From a project template file
- From Excel
- From Google Sheets
- Virtually any table or tab delimited format is accepted



```
Untitled - Notepad
File Edit Format View Help
ASY_NO ASY-XXX-XXX
ASY_REV AY
CO_ADDR_1 XXX XXXX ST, STE XXX
CO_ADDR_2 SAN DIEGO, CA 92***
CO_NAME CMPYXXXXXXXX
ENG ENGXXXXXXXX
FAB_NO FAB-XXX-XXX
FAB_REV FB
PCB_DATE XXX-XX-2015
PCB_NAME PCBXXXXXXXX
PROJ_NAME PRJXXX
SCH_NO SCH-XXX-XXX
SCH_REV SC
```

In Conclusion...

Altium[®]

Make full use of this valuable and often overlooked part of the tool.

- Use Special Strings
- Use Project Parameters
- Place them in your start up file in multiple locations...
- Notes, title block, below board text, silkscreen, etch, etc.
- Make your documentation bullet proof.
- **Never miss an item or suffer a typo in documentation again!**

Thanks for your Attention!
Questions?